



*Norway rats and house mice may consume a lethal dose in a single night's feeding with first dead rodents appearing four or five days after feeding begins.

For Use In and Around Agricultural Buildings Only.

Kills Rats & House Mice ***Mata ratas y ratones domésticos***

Kills Norway rats, roof rats, house mice and warfarin resistant Norway rats.

This product has been treated with S-methoprene to protect the bait from infestation by insects.

ACTIVE INGREDIENT:

Bromadiolone0.005%

OTHER INGREDIENTS:.....99.995%

TOTAL:100.000%

*Contains denatonium benzoate

KEEP OUT OF REACH OF CHILDREN
CAUTION

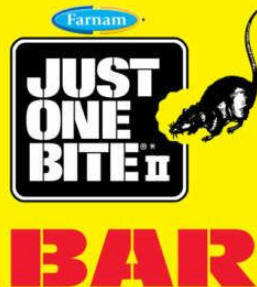
See back panel for additional precautionary statements.

EPA Reg. No. 270-373 • (A) EPA Est. No. 75806-AZ-1 (B) EPA Est. No. 61282-WI-01
Circled letter in front of the EPA Est. No. corresponds to the first letter in lot number on container.

CONTAINS 8
Individually Wrapped
1 Pound Bars!



NET CONTENTS:
8 lbs (8, 16 oz bars)



*Norway rats and house mice may consume a lethal dose in a single night's feeding with first dead rodents appearing four or five days after feeding begins.

- Kills rats and house mice.
- Bar pieces fit in runways and hard-to-reach areas where rats and mice live and breed.
- The hole through the middle allows for mounting in bait stations.

PRECAUTIONARY STATEMENTS HAZARDS TO HUMANS AND DOMESTIC ANIMALS CAUTION

Harmful if swallowed. Keep away from children, domestic animals and pets. Causes moderate eye irritation. Do not get in eyes, or on clothing. All handlers (including applicators) must wear long-sleeved shirt and long pants, shoes plus socks, and gloves. Any person who retrieves carcasses or unused bait following application of this product must wear gloves.

User Safety Requirements

Follow manufacturer's instruction for cleaning/maintaining PPE. If no such instructions for washables, use detergent and hot water. Keep and wash PPE separately from other laundry. Remove PPE immediately after handling this product. Wash the outside of gloves before removing. As soon as possible, wash hands thoroughly after applying bait and before eating, drinking, chewing gum, using tobacco, or using the toilet and change into clean clothing.

FIRST AID

Have label with you when obtaining treatment advice.

IF SWALLOWED:

- Call a poison control center or doctor immediately for treatment advice.
- Have person sip a glass of water if able to swallow.
- Do not induce vomiting unless told to do so by a poison control center or doctor.
- Do not give anything by mouth to an unconscious person.

IF IN EYES:

- Hold eye open and rinse slowly and gently with water for 15-20 minutes.
- Remove contact lenses, if present, after the first 5 minutes, then continue rinsing eye.
- Call a poison control center or doctor for treatment advice.

HOT LINE NUMBER

Have the product container or label with you when calling a poison control center or doctor, or going for treatment. You may also contact 800-234-2269 for emergency medical treatment information.

NOTE TO PHYSICIAN

If swallowed, this material may reduce the clotting ability of the blood and cause bleeding. If ingested, administer Vitamin K₁ intramuscularly or orally. Repeat as necessary based on monitoring of prothrombin times.

TREATMENT FOR PET POISONING

If animal eats bait, call veterinarian or 800-234-2269 at once.

NOTE TO VETERINARIAN

Anticoagulant Bromadiolone: For animals ingesting bait and/or showing poisoning signs (bleeding or elevated prothrombin times), give Vitamin K₁. If needed, check prothrombin times every 3 days until values return to normal (up to 30 days). In severe cases, blood transfusions may be needed.

ENVIRONMENTAL HAZARDS

This product is extremely toxic to mammals and birds. Dogs, cats and other predatory and scavenging mammals and birds might be poisoned if they feed upon animals that have eaten this bait. This pesticide is toxic to fish. Do not apply this product directly to water or areas where surface water is present or to intertidal areas below the mean high water mark. Runoff also may be hazardous to aquatic organisms in water adjacent to treated areas. Do not contaminate water by cleaning of equipment or disposal of wastes.

DIRECTIONS FOR USE

It is a violation of federal law to use this product in a manner inconsistent with its label.

READ THIS LABEL: READ THIS ENTIRE LABEL AND USE STRICTLY IN ACCORDANCE WITH USE DIRECTIONS, USE RESTRICTIONS, AND WITH APPLICABLE STATE AND FEDERAL REGULATIONS. USE ONLY FOR THE SITES, PESTS, AND APPLICATION METHODS DESCRIBED ON THIS LABEL.

It is illegal to sell these bars individually.

IMPORTANT: Do not expose children, pets or other nontarget animals to rodenticides. To help prevent accidents:

1. Store product not in use in a location out of reach of children and pets.
2. Apply bait in locations out of reach of children, pets, domestic animals and nontarget wildlife, or in tamper-resistant bait stations. These stations must be resistant to destruction by dogs and by children under six years of age, and must be used in a manner that prevents such children from reaching into bait compartments and obtaining bait. If bait can be shaken from stations when they are lifted, units must be secured or otherwise immobilized. Even stronger bait stations are needed in areas open to hoofed livestock, raccoons, bears or other potentially destructive animals, or in areas prone to vandalism.
3. Dispose of product container, unused, spoiled and unconsumed bait as specified on this label.

Note: Bait stations are mandatory for outdoor, above-ground use. Tamper-resistant bait stations must be used if children, pets, non-target mammals, or birds may access the bait.

Do not apply this product in a way that will contact workers or other persons. For any requirements specific to your State or Tribe, consult the agency responsible for pesticide regulation.

USE RESTRICTIONS: This product can only be used to control Norway rats, roof rats, and house mice in and within 100 feet of agricultural buildings and man-made agricultural structures constructed in a manner so as to be vulnerable to commensal rodent invasions and/or to harboring or attracting rodent infestations. Fence and perimeter baiting, beyond 100 feet from an agricultural structure as defined above, is prohibited. This product must not be applied directly to food or feed crops.

Do not sell this product in individual containers holding less than 8 pounds of bait.

SELECTION OF TREATMENT AREAS

Determine areas where rats and/or mice will most likely find and consume the bait. Generally, these are along walls, by gnawed openings, in corners and concealed places, between floors and walls, or in locations where rats and/or mice or their signs have been seen. Protect bait from rain and snow. Remove as much alternative food as possible. Burrow baiting with Just One Bite® II Bars is prohibited.

APPLICATION DIRECTIONS

Each Just One Bite® II bait bar weighs one pound and is scored to be broken into 2-oz pieces.

RATS: While wearing gloves, apply two to eight 2-oz pieces of bar (or one entire BAR) at each placement location in infested areas. For above ground treatment, space bait placements 15 to 30 feet apart. Maintain an uninterrupted supply of fresh bait for 10 days or until fresh signs of rat activity cease to appear.

MICE: While wearing gloves, break bar into 2-oz pieces and apply one 2-oz bar piece per placement in infested areas at 8 to 12 foot intervals in infested areas. Maintain an uninterrupted supply of fresh bait for 15 days or until fresh signs of mouse activity cease to appear.

FOLLOW-UP: Replace contaminated or spoiled bait immediately. Wearing gloves, collect and dispose of all dead animals and leftover bait properly. To prevent reinfestation, eliminate sources of rodent food, water and harborage as much as possible. If reinfestation does occur, repeat treatment. Where a continuous source of infestation is present, establish permanent bait stations and replenish bait as needed.

STORAGE AND DISPOSAL

Do not contaminate water, food or feed by storage and disposal.

PESTICIDE STORAGE: Store only in original container, in a cool, dry place inaccessible to children and pets. Keep containers closed and away from other chemicals.

PESTICIDE DISPOSAL: Dispose of wastes resulting from the use of this product in trash or at an approved waste disposal facility.

CONTAINER HANDLING: Nonrefillable container. Do not reuse or refill this container. Dispose of empty container by placing in trash, at an approved waste disposal facility or by incineration.

CONDITIONS OF SALE

To the extent consistent with applicable law FARNAM COMPANIES, INC. warrants this product in its unopened package conforms to the chemical description on the label and is reasonably fit for the purposes set forth on the label when used according to directions under normal use conditions as specified on this label. There are no other warranties, expressed or implied, concerning the use of this product other than as indicated on the label. To the extent consistent with applicable law, this warranty does not extend to the handling or use of this product contrary to label instructions or under abnormal conditions or conditions not reasonably foreseeable to seller, and buyer assumes all risk of any such use.



Manufactured for: **FARNAM COMPANIES, INC.**
P.O. Box 34820 • Phoenix, AZ 85067-4820

www.farnam.com

Call with comments or questions: 800-234-2269

Item: 100504295 • 14-20004 • RM# 99.0000730.01

©2010, 2013, 2014 Farnam Companies, Inc.

Farnam, Farnam with design and Just One Bite are trademarks of Farnam Companies, Inc. Central Garden & Pet and Central Garden & Pet with design are trademarks of Central Garden & Pet Company.



CENTRAL
Garden & Pet

DIRECTIONS FOR USE

It is a violation of Federal law to use this product in a manner inconsistent with its labeling.

READ ENTIRE LABEL AND USE STRICTLY IN ACCORDANCE WITH USE DIRECTIONS, USE RESTRICTIONS, AND WITH APPLICABLE STATE AND FEDERAL REGULATIONS. REFER TO THE OUTER LABEL FOR COMPLETE DIRECTIONS FOR USE.

It is illegal to sell these bait bars individually.

STORAGE AND DISPOSAL

Do not contaminate water, food or feed by storage and disposal.

PESTICIDE STORAGE: Store only in original container in a cool, dry place inaccessible to children and pets. Keep containers closed and away from other chemicals.

PESTICIDE DISPOSAL: Dispose of wastes resulting from the use of this product in trash or at an approved waste disposal facility.

CONTAINER HANDLING: Nonrefillable container. Do not reuse or refill this container. Dispose of empty container by placing in trash, at an approved waste disposal facility or by incineration.

CONDITIONS OF SALE

To the extent consistent with applicable law FARNAM COMPANIES, INC. warrants this product in its unopened package conforms to the chemical description on the label and is reasonably fit for the purposes set forth on the label when used according to directions under normal use conditions as specified in the label. There are no other warranties, expressed or implied, concerning the use of this product other than as indicated on this label. To the extent consistent with applicable law, this warranty does not extend to the handling or use of this product contrary to label instructions or under abnormal conditions or conditions not reasonably foreseeable to seller, and buyer assumes all risk of any such use.

Manufactured for:



Farnam Companies, Inc.
P.O. Box 34820 • Phoenix, AZ 85067-4820
www.farnam.com

Call with comments or questions:
1-800-234-2269

Product Code: 100504295

RM# 99.0000729.00

10-2091



Farnam, the Farnam logo and Just One Bite are trademarks of Farnam Companies, Inc. Central Garden & Pet and its logo are trademarks of Central Garden & Pet Company.



IBAR

*Norway rats and house mice may consume a lethal dose in a single night's feeding with first dead rodents appearing four or five days after feeding begins.

For use in and around agricultural buildings only.

Kills Rats & House Mice
Mata ratas y ratones domésticos

For indoor and outdoor rat and house mouse control.

Kills Norway rats, roof rats, house mice and warfarin resistant Norway rats.

This product has been treated with S-methoprene to protect the bait from infestation by insects.

ACTIVE INGREDIENT:

Bromadiolone.....0.005%

OTHER INGREDIENTS¹.....99.995%

TOTAL:.....100.000%

¹Contains denatonium benzoate

KEEP OUT OF REACH OF CHILDREN
CAUTION

See back panel for additional precautionary statements.

EPA Reg. No. 270-373

EPA Est. No. 75806-AZ-1

NET CONTENTS:
1 lb (454 g)

Not For Individual Resale



PRECAUTIONARY STATEMENTS

Hazards To Humans And Domestic Animals

CAUTION: Harmful if swallowed. Keep away from children, domestic animals and pets. Causes moderate eye irritation. Do not get in eyes, or on clothing. All handlers (including applicators) must wear long-sleeved shirt and long pants, shoes plus socks, and gloves. Any person who retrieves carcasses or unused bait following application of this product must wear gloves.

User Safety Requirements

Follow manufacturer's instruction for cleaning/maintaining PPE. If no such instructions for washables, use detergent and hot water. Keep and wash PPE separately from other laundry. Remove PPE immediately after handling this product. Wash the outside of gloves before removing. As soon as possible, wash hands thoroughly after applying bait and before eating, drinking, chewing gum, using tobacco, or using the toilet and change into clean clothing.

FIRST AID

Have label with you when obtaining treatment advice

| | |
|----------------------|---|
| IF SWALLOWED: | <ul style="list-style-type: none">• Call a poison control center or doctor immediately for treatment advice.• Have person sip a glass of water if able to swallow.• Do not induce vomiting unless told to do so by the poison control center or doctor. |
| IF IN EYES: | <ul style="list-style-type: none">• Hold eye open and rinse slowly and gently with water for 15-20 minutes.• Remove contact lenses, if present, after the first 5 minutes, then continue rinsing eye.• Call a poison control center or doctor for treatment advice. |

NOTE TO PHYSICIAN

If swallowed, this material may reduce the clotting ability of the blood and cause bleeding. If ingested, administer Vitamin K₁ intramuscularly or orally. Repeat as necessary based on monitoring of prothrombin times.

TREATMENT FOR PET POISONING

If animal eats bait, call veterinarian or 1-800-234-2269 at once.

NOTE TO VETERINARIAN

Anticoagulant Bromadiolone: For animals ingesting bait and/or showing poisoning signs (bleeding or elevated prothrombin times), give Vitamin K₁. If needed, check prothrombin times every 3 days until values return to normal (up to 30 days). In severe cases, blood transfusions may be needed.

ENVIRONMENTAL HAZARDS: This product is extremely toxic to mammals and birds. Dogs, cats and other predatory and scavenging mammals and birds might be poisoned if they feed upon animals that have eaten this bait. This pesticide is toxic to fish. Do not apply this product directly to water or areas where surface water is present or to intertidal areas below the mean high water mark. Runoff also may be hazardous to aquatic organisms in water adjacent to treated areas. Do not contaminate water when disposing of equipment wash water or rinsate.



BAIR

*Norway rats and house mice may consume a lethal dose in a single night's feeding with first dead rodents appearing four or five days after feeding begins.



Kills Rats & House Mice

Mata ratas y ratones domésticos

For indoor and outdoor rat and house mouse control.

**Kills Norway rats, roof rats, house mice and
warfarin resistant Norway rats.**